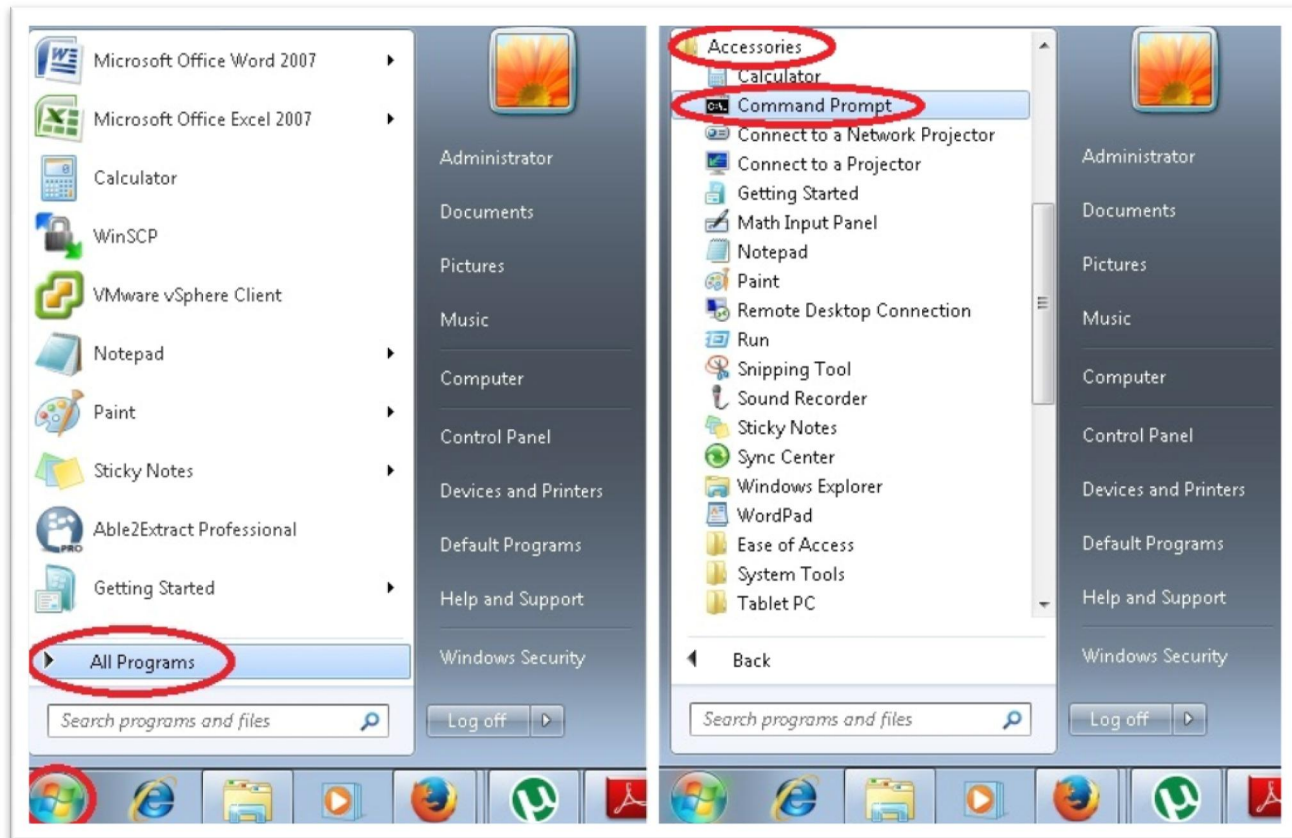


Obtaining MAC Address from your Computer

1. Open a command prompt window by following method (Fig-01)
Start--- programs--- Accessories--- Command Prompt.



(Fig-01)

2. In command prompt window type ipconfig /all as like (Fig-02).

```
Administrator: C:\Windows\system32\cmd.exe
Microsoft Windows [Version 6.1.7600]
Copyright (c) 2009 Microsoft Corporation. All rights reserved.

C:\Users\Administrator>ipconfig /all
```

(Fig-02)

3. Find Physical Address line under the both **Wireless Network** and **Local Area** connection paragraphs as like

```
C:\Windows\system32\cmd.exe
Microsoft Windows [Version 6.1.7601]
Copyright (c) 2009 Microsoft Corporation. All rights reserved.

C:\Users\shahzad>ipconfig /all

Windows IP Configuration

Host Name . . . . . : shahzad-PC
Primary Dns Suffix . . . . . :
Node Type . . . . . : Hybrid
IP Routing Enabled. . . . . : No
WINS Proxy Enabled. . . . . : No

Wireless LAN adapter Wireless Network Connection:
Connection-specific DNS Suffix . . . :
Description . . . . . : DW1501 Wireless-N WLAN Half-Mini Card
Physical Address. . . . . : 68-A3-C4-9B-91-1A
DHCP Enabled. . . . . : Yes
Autoconfiguration Enabled . . . . . : Yes
Link-local IPv6 Address . . . . . : fe80::d4c3:1f21:82c1:afc9%13(Preferred)
IPv4 Address. . . . . : 10.16.3.160(Preferred)
Subnet Mask . . . . . : 255.255.255.0
Lease Obtained. . . . . : Tuesday, November 19, 2013 10:55:54 AM
Lease Expires . . . . . : Tuesday, November 19, 2013 1:42:34 PM
Default Gateway . . . . . : 10.16.3.1
DHCP Server . . . . . : 10.16.99.99
DNS Servers . . . . . : 10.16.99.99
                        10.16.99.10
NetBIOS over Tcpip. . . . . : Enabled

Ethernet adapter Local Area Connection:
Connection-specific DNS Suffix . . . :
Description . . . . . : Broadcom NetXtreme Gigabit Ethernet
Physical Address. . . . . : B8-AC-6F-C9-7C-49
DHCP Enabled. . . . . : No
Autoconfiguration Enabled . . . . . : Yes
Link-local IPv6 Address . . . . . : fe80::c061:284e:e396:5a7a%10(Preferred)
IPv4 Address. . . . . : 10.16.3.9(Preferred)
Subnet Mask . . . . . : 255.255.255.0
Default Gateway . . . . . : 10.16.3.1
DHCPv6 IAID . . . . . : 246983791
DHCPv6 Client DUID. . . . . : 00-01-00-01-19-C1-22-05-B8-AC-6F-C9-7C-49

DNS Servers . . . . . : 10.16.99.99
                        8.8.8.8
NetBIOS over Tcpip. . . . . : Enabled

Tunnel adapter isatap.{A571ED96-C657-45AA-A11E-BBB410E12967}:
```

(Fig-03)